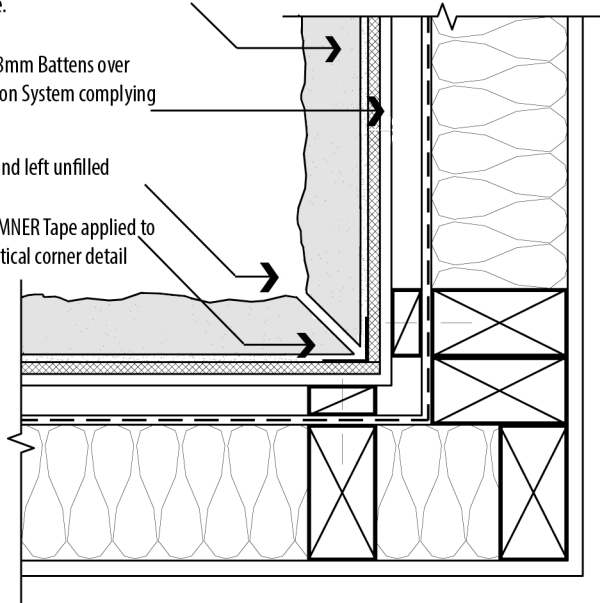


SUMNER stone veneer fixed with SUMNER Grip adhesive to 9mm SUMNER Board after first coating with SUMNER Prime.

SUMNER 45x18mm Battens over Frame Protection System complying with NZBC

Stone mitred and left unfilled

SUMNER Tape applied to vertical corner detail



4.0.0

## Internal Corner Detail

SCALE

NTS

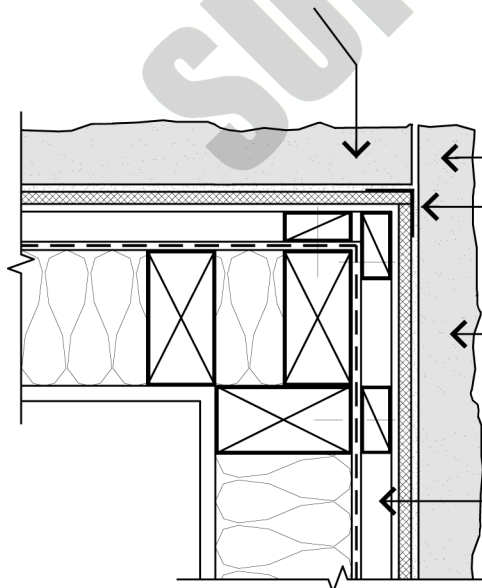
DATE

October 14



Original Stone Co Ltd  
PO Box 125 029, St Heliers  
Auckland 0800 157 340

Stonework butts in behind the Natural End of the adjacent wall



Natural End panels protruding 40mm beyond substrate

Sumner Tape applied to corner detail

SUMNER stone veneer fixed with SUMNER Grip adhesive to 9mm SUMNER Board after first coating with SUMNER Prime.

SUMNER 45x18mm Battens over Frame Protection System complying with NZBC

4.0.1

## External Corner Detail (Using Natural Ends)

SCALE

NTS

DATE

October 14



Original Stone Co Ltd  
PO Box 125 029, St Heliers  
Auckland 0800 157 340