

Hyde stone veneer fixed with SUMNER Grip adhesive to 9mm SUMNER Board after first coating with SUMNER Prime.

SUMNER L Fixings at 600mm Vertical and Horizontal centers

SUMNER 45x18mm Battens over Frame Protection System complying with NZBC

BGC UPVC punched cavity closer

DPM

Typical footing eg. 200 series concrete block

225 to FGL
150 to paving

Sumner Primer applied to exposed bottom edge of Sumner 9mm FCS board

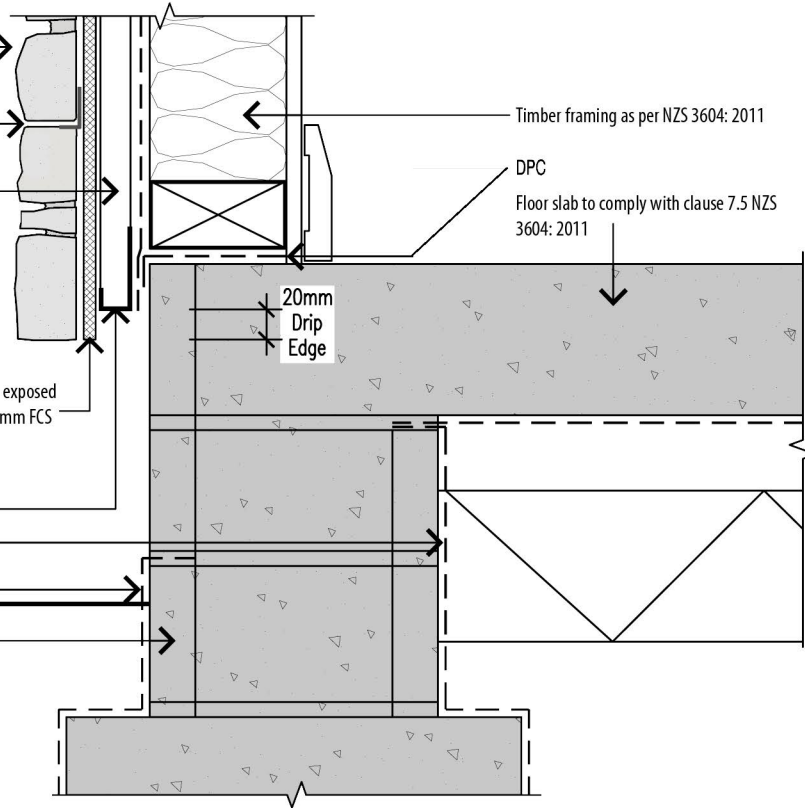
50

20mm Drip Edge

Timber framing as per NZS 3604: 2011

DPC

Floor slab to comply with clause 7.5 NZS 3604: 2011



1.0

Standard Slab Edge Detail

SCALE

NTS

DATE

Sept 16



Hydestone Ltd

Hyde stone veneer fixed with SUMNER Grip adhesive to 9mm SUMNER Board after first coating with SUMNER Prime.

SUMNER L Fixings at 600mm Vertical and Horizontal centers

SUMNER 45x18mm Battens over Frame Protection System complying with NZBC

10mm wide vertical weep hole at 575 to 600mm centres

Rebate for batten and backing sheet

DPM

Typical footing eg. 200 series concrete block

225mm to Unpaved Ground

100

10 gap

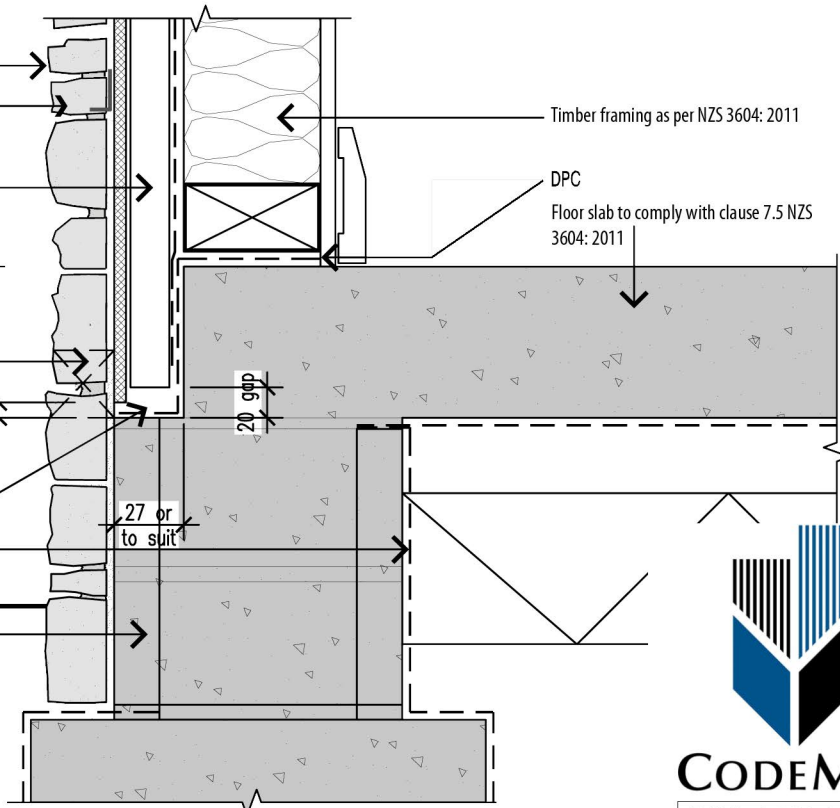
27 or to suit

20 gap

Timber framing as per NZS 3604: 2011

DPC

Floor slab to comply with clause 7.5 NZS 3604: 2011



CODEMARK™

BCS-141814-CMNZ

2.0

Rebated Slab Edge Detail

SCALE

NTS

DATE

Sept 16



Hydestone Ltd