

SUMNER approved stone veneer fully adhered using SUMNER Grip to 9mm SUMNER Board after first coating with SUMNER Primer.

SUMNER VERMINI Battens 45x18mm over Frame Protection System complying with NZBC

18mm cavity closer (optional for aesthetic purposes as SUMNER VERMINI Battens have inbuilt vermin proofing)

SUMNER L Fixings at 600mm Vertical and Horizontal centres

SUMNER Primer applied to exposed bottom edge of 9mm SUMNER Board

DPM

Typical footing eg. 200 series concrete block

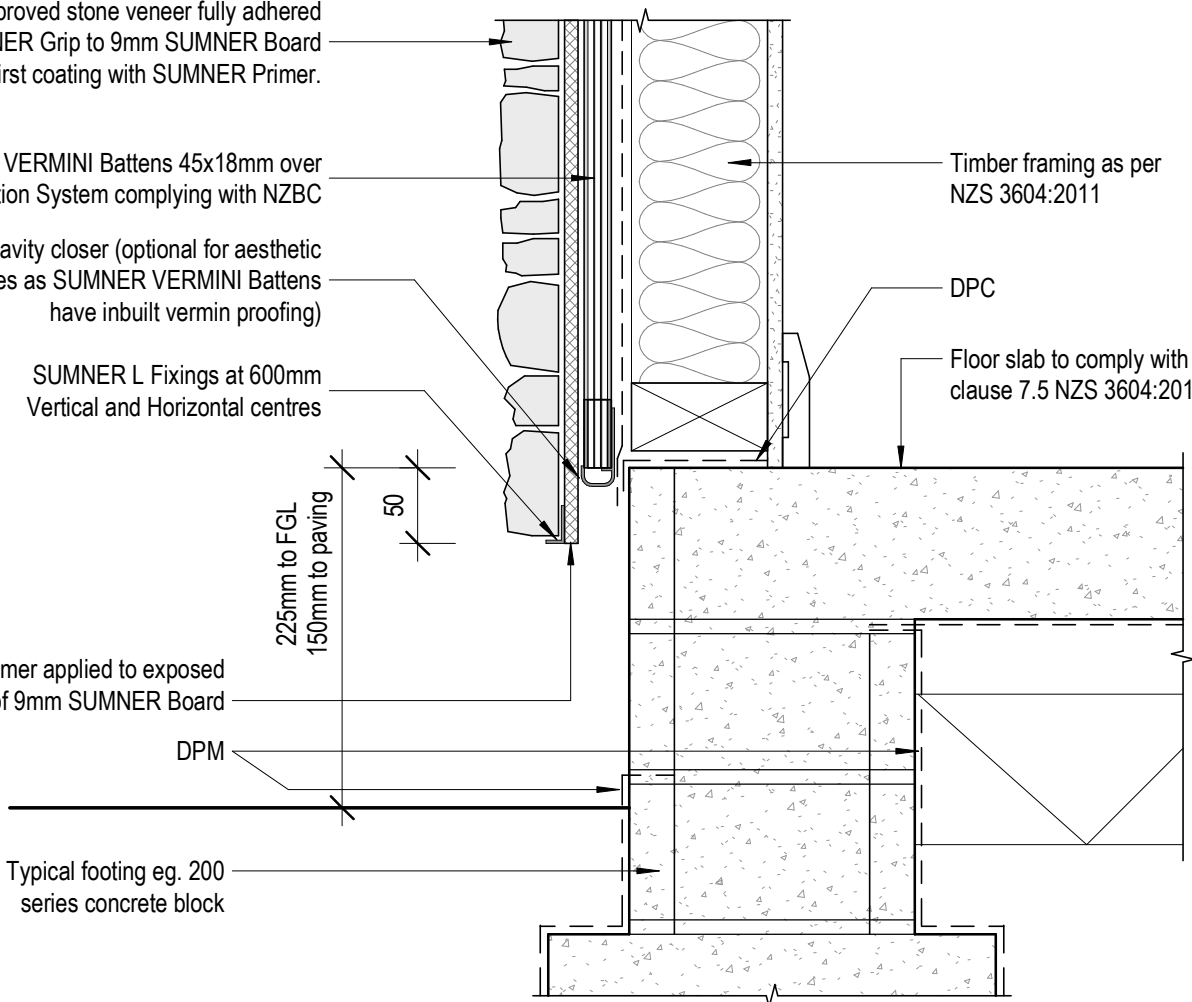
225mm to FGL
150mm to paving

50

Timber framing as per NZS 3604:2011

DPC

Floor slab to comply with clause 7.5 NZS 3604:2011



CODEMARK™
BCS-171817-CMNZ



SUMNER
PROFESSIONAL CLADDING SYSTEMS

www.sumnerschist.co.nz/

Approved Stone Veneer on SUMNER Tile System

Standard Slab Edge - Timber Frame

Date April 2019

Drawn by SUMNER

Checked by DS

3.0.0

Scale 1 : 5