

SUMNER approved stone veneer fully adhered using SUMNER Grip to 9mm SUMNER Board after first coating with SUMNER Primer.

SUMNER L Fixings at 600mm Vertical and Horizontal centres

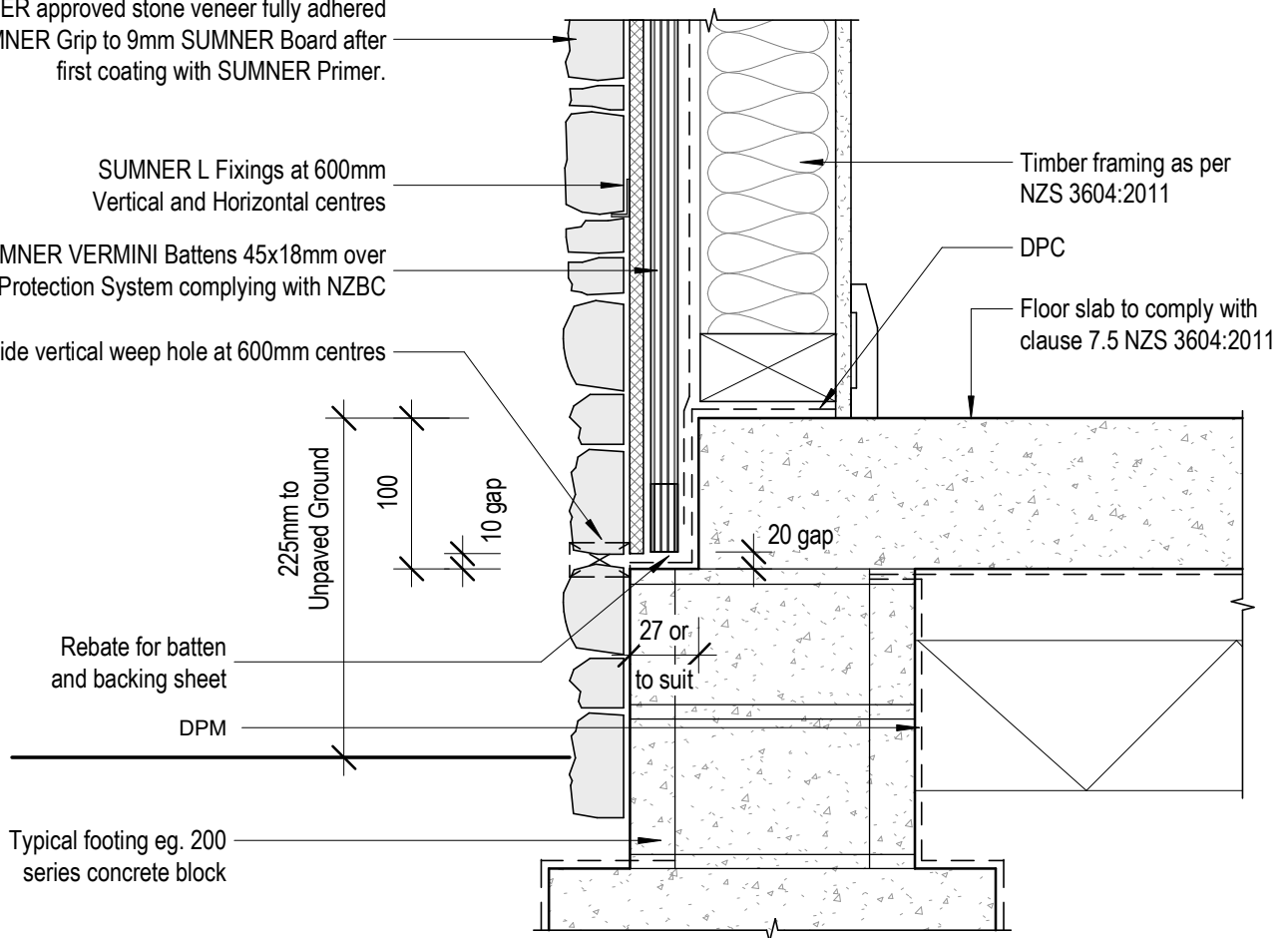
SUMNER VERMINI Battens 45x18mm over Frame Protection System complying with NZBC

10mm wide vertical weep hole at 600mm centres

Timber framing as per NZS 3604:2011

DPC

Floor slab to comply with clause 7.5 NZS 3604:2011



CODEMARK™
BCS-171817-CMNZ



SUMNER
PROFESSIONAL CLADDING SYSTEMS

www.sumnerschist.co.nz/

Approved Stone Veneer on SUMNER Tile System

Rebated Slab Edge - Timber Frame

Date April 2019

Drawn by SUMNER

Checked by DS

3.0.1

Scale 1 : 5